



Scan Me



3M™ Dual Lock™

Strong and easy to use re-closable Fasteners - Hundreds of reattachments in a snap.

PRODUCTS SHEET

When you need a strong, reliable, yet removable closure or attachment, 3M™ Dual Lock™ Reclosable Fasteners are the easy alternative to traditional fastening methods such as screws, nuts or bolts.

Reliable Performance: Strong, interlocking mushroom-shaped heads. Peel apart to open; Easily attach and detach multiple times.

Customise: Mix and match stem densities for the ideal closure strength; Choose from a variety of widths and adhesive option.

Quick and Easy to Install: Adhesive sticks on contact to a variety of materials without special tools (no drilling, screwing, sewing); Non-adhesive product also available.

Design Flexibility: Lightweight and low profile; Fastener is hidden beneath the surface and does not interfere with the integrity of the design; No holes or traditional fastener mark.

Choosing 3M™ Dual Lock™ Reclosable Fasteners can solve attachment challenges in an instant with the confidence that you've made the best decision for how your project will look when it's unveiled.

Plus with the super strong bonds of 3M™ VHB™ Tape and powerful, interlocking mushroom-shaped heads, it also means you've chosen strength and easy to use reliable performance for the long run.

3M™ Dual Lock™ Reclosable Fasteners also enable:

- Up to 1,000 openings and closings before losing 50% of original tensile strength
- Reduced vibration

On the overleaf there is just a small selection of our 3M™ Dual Lock™ Reclosable Fasteners. We offer many more products within this range. If you have a requirement you would like to discuss please contact your Area Sales Manager or nearest branch.



Attach ambulance or bus cushion panels.



Secure plastic signs to window glass.



Attach access panels to industrial equipment.

3M™ SJ3540 Dual Lock Reclosable Fastener

SJ3540

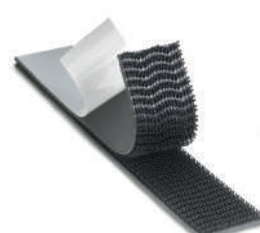


Type 250 stem pattern

- Pressure sensitive rubber adhesive backing
- General purpose, bonds to most surfaces
- Black in colour
- Mates to all type 250 and type 400 stem pattern

3M™ SJ3541 Dual Lock Reclosable Fastener

SJ3541



Type 400 Stem Pattern

- Pressure sensitive rubber adhesive backing
- General purpose, bonds to most surfaces
- Black in colour
- Mates to all type 250 and type 400 stem pattern

3M™ SJ3550 Dual Lock Reclosable Fastener

SJ3550



Type 250 Stem Pattern

- Pressure sensitive very high bond VHB adhesive backing
- High performance, used in aircraft, automotive and electronics applications
- Resists hot/cold and wet/dry cycles
- Black in colour
- Mates to all type 250 and type 400 stem pattern

3M™ SJ3551 Dual Lock™ Reclosable Fastener

SJ3551



Type 400 Stem Pattern

- Pressure sensitive very high bond VHB adhesive backing
- High performance, used in aircraft, automotive and electronics applications
- Resists hot/ cold and wet/ dry cycles.
- Mates to all type 250 and type 400 stem pattern

3M™ SJ3560 Dual Lock Reclosable Fastener

SJ3560

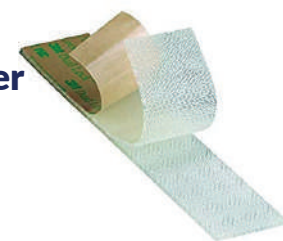


Type 250 Stem Pattern

- Clear pressure sensitive very high bond VHB adhesive backing
- UV resistant and plasticiser resistant
- Clear in colour
- Mates to all type 250 and type 400 stem pattern

3M™ Dual Lock™ Low Profile Reclosable Fastener

SJ4570



Type 4570 Stem Pattern

- Clear pressure sensitive acrylic adhesive
- General purpose applications
- Will flex for easy application
- Low profile
- Clear in colour
- Self mating

Castle Tapes and Industrial Solutions

Nottingham T: 0115 939 6061
E: Nottingham@castletis.co.uk

Walsall T: 01922 626664
E: Sales@castletis.co.uk



@Castle.TIS



linkedin.com/company/castle-tis



castletis.co.uk